



AUCTION

LEADING THE INDUSTRY SINCE 1945

Wednesday – February 28, 2018 – 5:30 PM

Fixer-Upper 1,386 Sq. Ft. Ranch Home

With Full Basement

32 X 28 Detached Garage With 8 X 10 Overhead Doors on 1.75 Acres
Wooded Lot – Troy Twp. – Geauga Co. – Berkshire Schools

ABSOLUTE AUCTION, All sells to highest bidders on location:

13250 Main Market St. (Rt. 422), Burton, OH 44021

Directions: Take US 422 east of Rt. 44 or west of Rt. 700 to auction. Watch for KIKO signs.



Home built in 1984, garage built 1991, nice setting, vinyl sided, shingle roof, covered porch, rear deck, 3 bedrooms, 1 1/2 baths, huge kitchen and dining room, 12 1/2 course block full basement with rec room, laundry, FA gas heat, central air. Nice 32 X 28 garage, block foundation, auto door openers, insulated, drain, concrete floor. Private setting. Lots of potential. Shown by appointment or open 2 hours before sale.

TERMS ON REAL ESTATE: 10% down auction day, balance due at closing. A 10% buyer's premium will be added to the highest bid to establish the purchase price, which goes to the seller. Any desired inspections must be made prior to bidding. All information contained herein was derived from sources believed to be correct. Information is believed to be accurate but not guaranteed.



Information is believed to be accurate but not guaranteed.



330.455.9357 • kikoauctions.com





KIKO AUCTIONEERS

2722 Fulton Dr. NW, Canton, OH 44718
kikoauctions.com

Wednesday – February 28, 2018 – 5:30 PM

FIXER-UPPER 1,386 SQ. FT. RANCH HOME

32 X 28 Detached Garage With 8 X 10 Overhead
Doors on 1.75 Acres
Wooded Lot – Troy Twp. – Geauga Co.

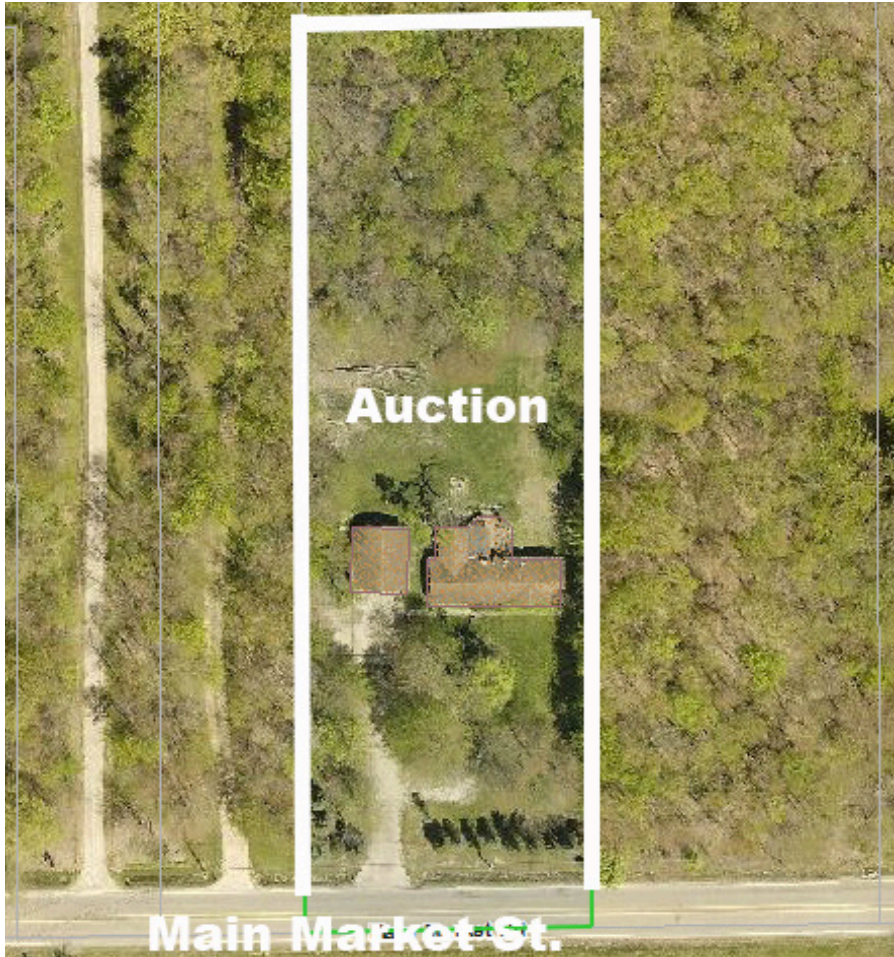


Members – State and National Auctioneers Association

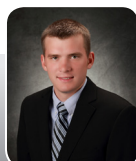


Auctioneer/Realtor:

Russell T. (Rusty) Kiko, Jr., C.A.I., ext 115, 330-495-0923 and Ryan M. Kiko, 330-831-8565



Auctioneer/Realtor®
RUSSELL T. (RUSTY) KIKO, JR.
330.495.0923
rustykiko@kikocompany.com



Auctioneer/Realtor®
RYAN M. KIKO
330.831.8565
ryankiko@kikocompany.com



330.455.9357 • kikoauctions.com

